

# Village News

**in Swindon Village, Cheltenham**

*Your local newsletter sponsored by the Parish  
Council and delivered by volunteers.*

**October 2023 Edition No.497**

## Upcoming Events



### OCTOBER

**Sunday 1st Harvest Festival** 10.30am & 6.30pm

**Saturday 7th Churchyard tidy** 9am

**Sunday 8th Litter Picking.** Meet 10.30 at Cross Hands  
Pub

**Monday 9th Parish Council Meeting**

**Wednesday 18th Swindon Village Society.** 'The Severn  
Bore'. By Chris Witts.

Village Hall. 7.30pm. Visitors welcome.

**Saturday 21st Quiz and Supper.** Village Hall. Doors open  
7pm

**Saturday 28th Halloween family event** at the Village  
Hall. Further details to follow.

### NOVEMBER

**Monday 13th Parish Council Meeting**

**Wednesday 15th Swindon Village Society.** 'Pilgrims and  
Pilgrimages in Gloucestershire'. By John  
Putley .

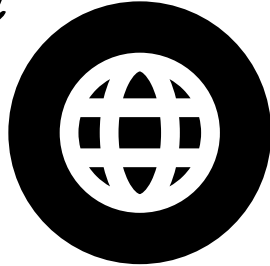
Village Hall. 7.30pm. Visitors welcome.

**Sunday 19th Craft fair. Village Hall.** Further details to  
follow.

# A Connected Community!



Using your phone's camera to hover over each QR Code square below for direct link access.



## **Parish Council Website**

For full, detailed information from and about the Parish Council visit [www.swindonparish.org.uk](http://www.swindonparish.org.uk)



## **Parish Council Facebook Page**

A public page for live information and news updates from the council:  
[www.facebook.com/swindonparish](http://www.facebook.com/swindonparish)



## **Swindon Village Facebook Community Group**

A private group for the discussion of local issues, sharing and requesting help in the local community.



## **Anti-Social Behaviour**

If you have any concerns about anti-social behaviour do not hesitate to contact the police.



**Ring 101** (you may be charged for this phone call) or **email**  
[101@gloucestershire.police.uk](mailto:101@gloucestershire.police.uk)

NB: Get an INCIDENT REPORT NUMBER and let the parish know about it. If the police are not made aware of the problem THERE ISN'T A PROBLEM.



# A Note From The Editor

---

I'm sure I've mentioned before how much I love living in this country. It is stunningly beautiful, but also quite bonkers!

Today was an excellent example of that. It is our younger daughter's birthday on Monday. Obviously, being a school day, we can't celebrate it properly, so we took ourselves off to Bath today, Saturday for a bit of a family celebration.

At Bekah's request we'd downloaded a treasure trail of Bath which was a guided walk around Bath, using landmarks to solve clues and work out the answer to a mystery. They are designed for families with children, but with the right attitude they work for all ages. I highly recommend them, and they make cities a bit more fun for children. Anyway, I digress, as I often do.

The main point of the trip was it was the end of a Jane Austen week where people dressed up in Regency costumes and wandered around Bath. Whilst we were wandering around playing "Spot Eliza Bennett and Mr Darcy", we also encountered the standard hen party - lots of sashes and tutus; stag party - Hawaiian shirts galore and the most bizarre of sights.

We heard him coming first: A rhythmic slap, slap followed by shouts of encouragement. As we turned around, we saw a chap coming towards us wearing a material "wet suit", goggles and flippers. He was happily walking along, when we heard a shout of "puddle" and he proceeded to jump around and splash with his flippers on the side of the road. Everyone stopped, sharing his glee - even the bus driver who couldn't pass until he'd got back on the path. When the chap realised that he was quite literally stopping traffic, he raised an apologetic hand to the bus driver who responded with a cheery wave! Completely bonkers, but it was the best thing we'd seen all day!

*Karren*



# Swindon Parish Council

---

## **SWINDON PARISH COUNCIL REPORT**

I may have mentioned before that things can move quite slowly in Local Government. We can become ensnared in bureaucracy or struggle to find the time tasks need to move them forward.

A number of tree issues have been on my radar for some time. The fallen willow by the bridge on Manor Road needs to be dealt with. The Parish Council has accepted a quote to have this tree removed. That should have happened by the time you read this (the work is scheduled for 27th September). We are grateful to Bill who suggested that the resulting wood chippings could be used to mitigate the muddiness of the footpath at the end of Stantons Drive. If this works then, like all good ideas, I'll claim it as my own.

I have talked before about the two chestnut trees in the Amenity Area. The one that is dying is to be reduced to a 2m tall monolith and left as a wildlife habitat. The one that is recovering will be reduced in spread. Because the Amenity Area is in a Conservation Area these tree works need planning consent. I have now got the green light for this work to proceed and I am getting quotes from tree surgeons.

The purchase of the Village Hall car park from the Borough Council is another matter that has dragged on longer than we hoped. With help from Borough Councillor Flo Clucas we have secured some changes to the draft purchase agreement. We have also agreed on a price and secured grant funding to make this happen. I am now working to engage a solicitor to do the conveyancing for us.

At its August and September meetings the Parish Council considered a total of four planning applications. No objections were raised.





# Swindon Parish Council

---

A couple of residents have contacted me expressing their concern at the speeding traffic in parts of the parish. The Parish Council shares residents' concerns and has been actively pursuing this matter for years. It is worth making the following points.

- The setting of speed limits is a matter for the County Council; the Parish Council has no power to act directly. We can lobby and campaign.
- The enforcement of speed limits is a matter for the police, and without enforcement speed limits are meaningless.
- The Parish Council successfully campaigned for traffic calming measures in Malmesbury Road to deter "boy racer" activity.
- Speed limit signs (or fly tipping signs, or dog waste signs) do not deter certain people; they aren't speeding because they are unaware of the speed limit and some local residents fail to observe the speed limits.
- The Parish Council met with the County Council Area Highways Manager to discuss this but he then left his job.
- We have secured stickers for wheelie bins asking drivers for restraint. Yes, the wheelie bin stickers are only displayed once a week but that is an advantage; people become blind to fixed signs.

We will continue to pursue this. It would help us if people felt able to join us to work on projects such as this. The Councillors have day jobs and can only do so much.

The Village News has been printed by Cotswold District Council for as long as I have been involved. They have provided a great service and when we last checked prices we found them to be very cost effective. However, with dropping demand for printed documents the Council is closing its printing department. If anyone knows good printers please suggest them to me.



# Swindon Parish Council

---

I have been accused of dominating the Village News. Last month was a special case though. I split my Village News contribution into three separate articles as I felt that having all of them together might have proved too much. There was my general Parish Council report, a separate article on planning matters and another on changes to polling arrangements from 2024. OK, I threw in another train article as well. Guilty as charged!

However, it is interesting to consider how the character of the Village News (and the parish) has changed in recent years. Going back to October 1974 the Village News contained articles from the Parish Council, the Church and the Village Hall. Whilst articles from these groups continue to feature to this day there were also contributions from the Scouts, the Wednesday Club, the WI, the PTA and the Youth Club.

Barry offers great value with his Swindon Village Society articles and it is great that Karren gives us notes from her perspective as editor. However, with the departure of Katie we have now lost our regular quizzes. \* I would like to join Karren in welcoming Dale, who will provide us with seasonal gardening advice. There must be more of you out there who have something to offer (a hobby, a skill or even just wry observations of life in the parish). Look on the brightside. If others contribute articles you might get less from me!

Quite a short article this month. Hopefully this makes up for last month! Not even any interesting(?) train facts to report. Oh well.

Shaun Cullimore  
Clerk to Swindon Parish Council

\* As if by magic the quiz has been reinstated thanks to Fiona!



Sunday 8th October 10.30 at Cross Hands pub.

*Many hands make light work...*

### **Churchyard Tidy-Up**

**Saturday 7th October at 9.00am**

Can you help tidy up the churchyard please?

Every year, at the end of the growing season, we try to smarten the churchyard up by removing stubborn weeds and excessive undergrowth.

We'll be starting work at 9am and we'll be grateful for any time you can give.

Please bring your own gardening tools. Rubbish bags will be provided, as will tea/ coffee and biscuits.

**May Shurmer**  
Churchwarden





**St. Lawrence's Church**  
**Sunday 1st October**

Everyone is welcome at our services

**Together @ Ten Thirty**

an informal service of praise at 10.30am

**Holy Communion** at 6.30pm

Gifts of groceries will be gratefully accepted and passed to CCP (Caring for Communities and People) Foodshare.



# St. Lawrence's Church

St. Lawrence's Church

## Chatterbox



Every Tuesday  
10.30am to 12noon



Pop in any time  
Coffee/tea and biscuits  
and a good old chat about anything and everything.  
Everyone's welcome, old or new.  
(It's free!)

### From the registers



#### Marriage

*We celebrated the marriage of*  
Maximillian Frew and Charlotte McAlary  
15th September



#### Interment of ashes

*We commemorated the life of*  
Norman Streeter                      24th August



# St. Lawrence's Church

 North Cheltenham  
Team Ministry

**St. Lawrence's Church**  
**Swindon Village**

## Regular Services

### **1st Sunday of the month:**

10.30am Together @ Ten Thirty all-age worship

6.30pm Holy Communion

### **All other Sundays:**

9.15am Holy Communion

6.30pm Evening Prayer

### **Every Wednesday:**

10.00am to 12noon Church open for private prayer

(Services are subject to change at short notice;  
contact the Churchwardens if you want to check.)

---

Enquiries about baptisms or weddings

If you would like to enquire about baptism (also called christening) or would like to book a wedding in St Lawrence's church, please contact Karen in the Team Office on

**01242 244373** or **admin@northchelt.org.uk**

You can contact the clergy via the office or by email:

Revd. Nick Bromfield (Team Rector) **nick.bromfield@northchelt.org.uk**  
or via the office.

**St. Lawrence's Church**

**It's that time of year again...!**

# **Quiz & Supper**

**Saturday 21st October**

**Village Hall**

**Doors and bar open 7.00pm**

Supper at 7.30pm followed by Quiz

Jacket Potatoes with a choice of fillings plus salad

followed by an apple pudding

Raffle

**£10 per person**

Maximum of six people to a team please

**To book, phone Karen Evans on 241678**

Profits will go towards the upkeep of St. Lawrence's Church

# St. Lawrence's Church



## In Loving Memory

A service of remembrance and reflection

Sunday 29th October at 6.30pm

The commemoration of All Souls is a quiet festival when we remember all those whom we have loved but who are no longer with us.

Our annual "In Loving Memory" service gives us a chance to remember our loved ones by name, and by lighting a candle, in God's presence.

St. Lawrence's Church will also be open on

Saturday 28th October from 10am to 3pm

for anyone who would like to spend some quiet time in remembrance or prayer and to light a candle for a loved one.



St. Lawrence's Church

## **Christmas Tree Festival**

Saturday 2nd and Sunday 3rd December

### **“A Favourite Book or Film”**

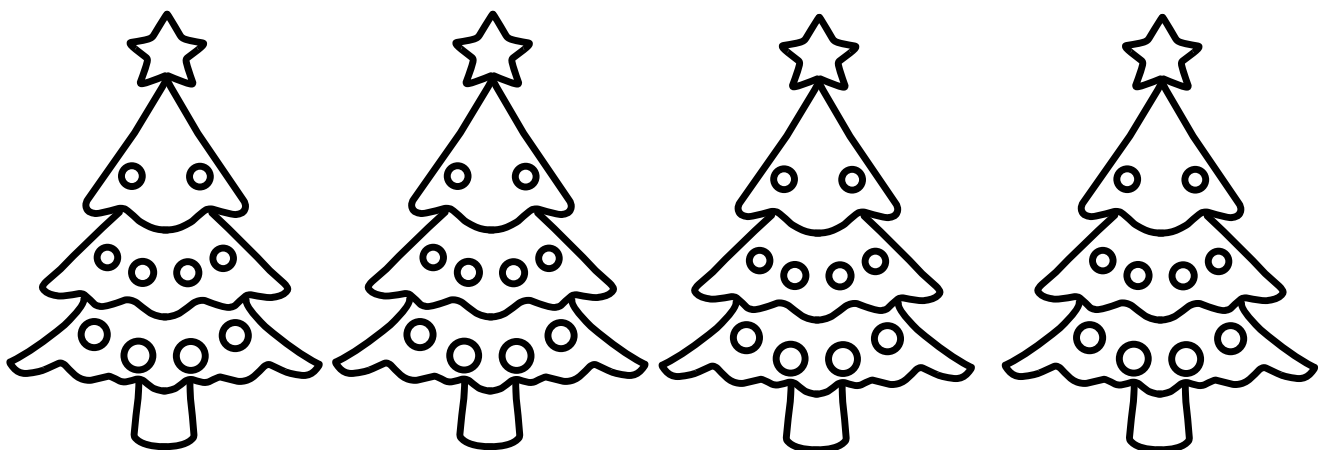
At the time of writing this, the weather is still a bit balmy but we need to plan ahead, so please turn your thoughts to December for a few minutes.

I just want to let you know that the theme for this year's Christmas Tree Festival will be “A Favourite Book or Film”.

As usual, the theme can be interpreted in any way you like and we hope that lots of you, groups and individuals, will want to take part in what has become a bit of a tradition marking the start of the Christmas season.

To register your interest or for more information please contact me.

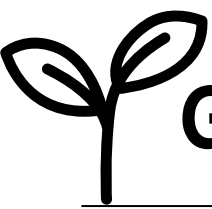
**Karen Evans - tel. 241678**



We welcome Fiona as our new Quiz Setter. I'm very grateful to her for offering to take this on. I'm sure I'm not the only one who missed the quiz last month.

Fiona moved to Quat Goose Lane in 2021, but has been visiting Swindon Village since 1997 as her parents moved to the Manor when it was renovated. Kathleen sadly died in 2019 but Keith still resides in the Manor. Fiona has been quizzing since the 80's when she was part of a pub team and regularly "forces" her adult children to join her in quizzes! She also used to set the questions for a university quiz competition and for a special interest publication. Please feel free to send any comments/suggestions about the quiz to [fiona@fionabiddle.co.uk](mailto:fiona@fionabiddle.co.uk)

1. Which city hosted the Eurovision Song Contest this year and which country won?
2. Who scored three drop goals in England's opening match in the Rugby World Cup and what club does he play for?
3. Who resigned as first minister of Scotland in February and who took over?
4. Who bought Twitter last October and what is its new name?
5. Who carried the ceremonial sword at the Coronation of Charles III and in which branch of the armed services has she served?
6. Who was the goalkeeper of the Lionesses in the world cup this summer and how many goals (not including penalty shoot outs) did she concede during the tournament?
7. Which film won the 2023 BAFTA for Best Film, and in which year was the book it is based on published?
8. Which Pope was buried in St Peter's Basilica, Rome in January and in what year had he become Pope?
9. In June, a submersible imploded in the Atlantic. What was it exploring and what was the name of the craft?
10. Which new TV reality show is set in a Scottish Castle and who presents it?



# Go grow with Dale

---

Hi all, October already! This is generally a time of year to prune and plan ahead when it comes to Gardening.

For us, the last couple of weeks has been pruning time for English Lavender, Alchemilla and all of our other Mediterranean Herbs, but don't worry if you've not done this yet, as long as they're pruned pre-winter, you shouldn't have many issues come spring.

When pruning, be sure to use sharp secateurs, this will give a nice clean cut and reduce the risk of disease. You want to aim to cut all the flower stems down to a leaf node and you should see silvery new growth already. In terms of shape, aim to achieve a mound like structure (bigger at the base). This shape will allow water to run off and reduce the risk of root rot and will also encourage neat and tidy growth for next year. Lavender can get a little woody and leggy with age so try not to cut right down to this or you will stunt the growth for next year.

We've both been so impressed by how much our English Lavender has grown since we bought them as two sets of six plugs back in Spring last year, they must be ten times the size now. A top tip that I learnt from a short talk at Gardeners World Live this year from Monty Don, was "Abuse your Mediterranean Herbs". What he meant by this is that they do best when neglected, in poor quality soil with next to no water, usually in a stoney environment. The clue is in the name, this is how they grow in the Mediterranean. They also hate too much water, so require very good drainage, which gravel/stone would provide. We planted ours in a 50/50 gravel/soil mix then surrounded the plants in 10mm gravel. Apart from watering in initially, we've never watered ours and they've definitely grown better because of that factor! These characteristics are often the same with other Mediterranean Herbs and we use the same logic for our Creeping Thyme etc.

That concludes this month, next month will contain plants you can start growing to save money and make your garden look beautiful!



# The Swindon Village Society

---

It didn't rain. In fact if you had to design a piece of weather for an evening garden party you could not do better than design the one we had in August. And the cheap fizzy wine wasn't that warm. And I am told that my wife's sausage rolls were first rate. It is just a pity that I was not actually fast enough to actually snaffle one. So all in all, the twenty odd of us who turned up had a very reasonable evening. So why am I always so pessimistic? I think it must relate back to the 2002 garden party when it actually did rain and has cast a shadow over my date selection ever since. I will have a good chat with my psychiatrist before I select a date next year and I am sure it will all be all right.

So what have we still got to come this year? Our September talk is on the Battle of Imjin River. This was a gallant action by the Gloucestershire Regiment in the Korean War where many of them were captured. Whenever I think about it, I am reminded of the small stone cross in Gloucester Cathedral which was carved by their commanding officer during his captivity. Our speaker on September is Dr Tim Brain who was Chief Constable but has the great advantage of being a real historian as his degree does confirm. Good to see him on the television recently talking about the 2007 floods a subject on which he gave us a talk a year or two back. However, by the time you read this the talk will be over and done.

In October we have Chris Witts back to tell us about the Severn Bore. Chris was Mayor of Tewkesbury once and a few years back gave us a first rate talk about operating commercial shipping on the Severn so we can't fault his credentials either.

Then in December we have a talk on Pilgrims and Pilgrimages in Gloucestershire by John Putley. I remember being surprised to be told by another real historian that probably the most interesting part of our own St Lawrence's Church are the carvings on the left side of



# The Swindon Village Society

---

the inner door stone jamb, which were made by pilgrims in centuries past. Maybe we will find out who they were, where they were going and what caused them to stop and leave their mark in Swindon Village.

And so to next year. It really is time we started putting something together so if anyone has ideas for talks or events that we can include, please let me know.

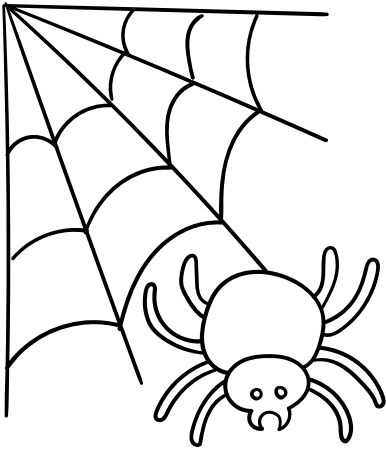
New members are always welcome and visitors are welcome at any meeting for £2. We will be glad to see you

Barry Simon

## ADVERTISE YOUR BUSINESS HERE

Buy two months, get a third free

- Quarter Page £9
- Half Page £18
- Full Page £36
- Artwork design available FOC
- Hand delivered to 900 homes in Swindon Village



Happy  
Halloween



Colouring for you to enjoy!



# Swindon Village Hall

---

Hello,

Here we are in late September already as I write this - I can't believe how fast the days are passing by. Before we know it, we will have to put our new heating system to the test and we hope it will be nice and toasty.

I hope that you have all noticed that the hedges around the Village Hall car park have had a trim and there's been a general tidy up of the area. The Village Hall roof has also been beautifully cleaned. Next up, we'd like to give the Hall inside a new coat of paint and fresh look.

We are planning to organize a Halloween Disco, this time on Saturday 28th of October. Please keep an eye on facebook and look out for posters when those are released.

We are also hoping to have a Christmas Craft Fair on 19th of November, hopefully with stalls outside in the car park and tables inside the hall. If you'd like to set up a stall inside or outside, please email us at [swindonvillagehall@gmail.com](mailto:swindonvillagehall@gmail.com) - both will be at a cost of £10.

Those will be followed by a quiz and Father Christmas Grotto, but more about those in next Village News.

Best Wishes.

Jana





# Bekah's Bites

---

## Tuna Rice Salad

Makes about 3 servings.

Great use of left over rice, could also substitute tuna for left over salmon, just flaked with a fork. I probably use a 1:3 ratio of tuna to rice but whatever you have left over! As usual, add or take away any veg from the recipe and chop as big or small as you want! All measurements are guesstimates!

### Ingredients:

- 1 can of tuna, drained
- Just under  $\frac{3}{4}$  of a takeaway Tupperware container of cold cooked rice
- Half a cucumber
- 2 big tomatoes
- 1 stick of celery
- 2 spring onions
- Siracha and Mayonnaise (or salad cream but I like Mayo) in a 1:2 ratio, add as much as you want, I like to add quite liberally!
- About 2-4 tbsp of soy sauce, I like more

### Method:

1. Add all to bowl/large bowl and mix/shake
2. Adjust sauces accordingly
3. Eat!

Can be served with avocado but might go brown if mixed in kept in fridge. Also might be nice with crispy seaweed thins or lettuce wraps.



## Answers to Quiz

1. Liverpool, Sweden
2. George Ford, Sale Sharks
3. Nicola Sturgeon, Humza Yousaf
4. Elon Musk, X
5. Penny Mourdant, the Royal Navy
6. Mary Earps, 4
7. All Quiet on the Western Front, 1929
8. Benedict XVI, 2005
9. Titanic, Titan
10. The Traitors, Claudia Winkleman

# The Beauty HUT

Qualified and insured Beauty Salon  
located in Swindon Village.

Offering eyelash extensions, lash  
lifts/tints, Brow treatments including  
threading/tinting/lamination.  
Skin tightening treatments also available.

Please contact Helen 07989 236180



*@the.beauty.hut.Cheltenham*



Helen Gill   
School of Ballet

## Little Pirouettes Parent & Toddler Ballet Class

Wednesdays  
9.30am - 10am

St Nicolas' Hall  
Swindon Lane

To book a place please contact  
[helengill.balletelive.com](http://helengill.balletelive.com)



**Extensions**  
**Refurbishments**  
**Loft Conversions**  
**Kitchen/Bathroom Remodels**  
**Interior/Exterior Decoration**  
**General Building Maintenance**

**Tel: 07855 875 933**

## PW Footcare

Foot Health Practitioner  
P. White. Dip SAC FHP, RGN, BSc (Hons)



Qualified and insured.  
Providing a mobile clinic to  
people at home or in care  
homes. Using sterilized  
tools. DBS checked.

### Conditions Treated

Corns and calluses  
Ingrown toenails  
Cutting and filing toenails and thickened toenails  
Verrucas  
Athlete's foot  
Diabetic foot care

Contact Pushpa for any further information on

**07873575560**  
**01242 250691**

Email: [pushpa@pwfootcare.co.uk](mailto:pushpa@pwfootcare.co.uk)  
Website: [pwfootcare.co.uk](http://pwfootcare.co.uk)



## Blank Canvas Cakes

*Natasha Hawkins*

Blank Canvas Cakes is about creating beautiful distinct artwork on delicious freshly baked cakes.

Delicious design Distinctly yours

Make your day extra special with a unique cake that is designed all around you and your special moments. A freshly baked cake, fully iced and then painted with your unique design idea or alternatively if you wish to provide a ready baked cake I am also happy to apply the wonderful finishing touches of icing and painting the design.

Free Consultations

Prices start from **£25** for design services or **£50** for a full cake.

Available for collection or delivery at an extra cost

20% Discount off your first order  
with this advert



### contact

**07980916927**



Blank Canvas Cakes



@ BlankCanvasCakes

## **SWINDON PARISH COMMUNITY ORGANISATIONS**

**Footpaths** John Heathcott 527753

**Scouts, Cubs, Beavers** info@ 1sv-scouts.co.uk

**Rainbow Guider** Hannah Butler 07464 784155

**Village Hall Chair** Jana Bridger 07913 911930  
swindonvillagehall@gmail.com

**Village Hall Booking Secretary** Jana Bridger 07514 594351

**Village News Distribution** Hugh Evans 241678

**Play Group** (Playgroup hours) 690479

**Winemakers' Secretary** Roy Harper 662861

**School Headteacher** Geraint Mills 690016

**Friends of the School** chairfosvps@gmail.com

**Art & Crafts Club** Lynne 07515 461876

**Swindon Village Society** Barry Simon 521723

**Mary Godwin Under 5s** (Playgroup hours) mgu5@hotmail.co.uk

**Marle Hill W.L.** Sara Jefferies 07477894639 / 692500

**Save The Countryside** Helen Wells 07770 986078

Please inform the editors of any changes to the contact details for village organisations.

**Deadline for the next issue of the Village News is the 16th October 2023**

Please send contributions to the editors via Karren Parsons  
at 29 Dark Lane or e-mail village-news@swindonparish.org.uk

## SWINDON PARISH COUNCIL

Cllr. James Cornish (Chairman)	07950 196709
Clr. Helen Wells	220875 or 07770 986078
Cllr. Lisa Whitaker	07715 470842
Clr. Sharon Collicutt	07884 184423
Cilr. Natalie Blankley	07725 948935
Clr. Alison Berry	07754 006634
Clr. Lynne Allen	07979 890134

***Vacancy 1 (please get in touch if you would be interested in joining)***

***Vacancy 2 (please get in touch if you would be interested in joining)***

Mr Shaun Cullimore (Clerk to the Council) 07833 089435  
parish.clerk@swindonparish.org.uk

### Cheltenham Borough Councillors

Clr. Flo Clucas	255844
Cllr. Bernard Fisher	07523 421012

### County Councillor

Cllr. Bernard Fisher	07523 421012
----------------------	--------------

### Allotments Manager

Chaz Pearce..... Please contact via Shaun Cullimore

Swindon Parish and Community Website: <https://swindonparish.org.uk>

## ST.LAWRENCE'S CHURCH

Part of the North Cheltenham Team Ministry

Team Rector:	Revd. Nick Bromfield,.....	nick.bromfield@northchelt.org.uk
Churchwardens:	Hugh Evans, .....	241678
	May Shurmer.....	241033
Tower Captain:	Hugh Evans,.....	241678
Organist:	John Collins.....	511950

### North Cheltenham Team Ministry Office

St. Nicolas' Church, Swindon Lane, 244373  
Cheltenham GL50 4PA admin@northchelt.org.uk

The office is open on Monday to Friday 9am to 12 noon. Outside these hours please leave a message on the answer phone.

**The contents of this newsletter do not necessarily reflect the views of the Editors or the Parish Council.**